



Sponsored by:  
**AECOM** Imagine it.  
 Delivered.



**IMESA**  
 2018 COMPANION TOUR  
 Port Elizabeth | R900pp

**DAY 1**  
**WEDNESDAY**  
 31 October 2018

**Route 67 & Campanile outing**

Depart at 08:30 / 09:00 from the Boardwalk Hotel



Route 67



Campanile



Donkin

Explore Port Elizabeth's Route 67 stopping at various points. Route 67 consists of 67 Public Art Works symbolising Nelson Mandela's 67 years of work dedicated to the Freedom of South Africa and includes 67 steps leading up the second largest flag in Africa. The artworks were designed by local artists from the Eastern Cape. The route is a proud celebration of our cities heritage and history.

Companions will climb the famous newly renovated Campanile. The Campanile contains the largest carillon of bells in the country in addition to its chiming clock. When its song time, the tower tops ring out with a carillon of the original 23 bells, conjuring nostalgic cries of history. The excursion will end with a little picnic at the Donkin with cold drinks and treats.

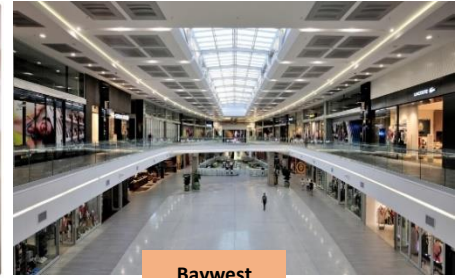
**DAY 2**  
**THURSDAY**  
 01 November 2018

**Ceramic art class with Shopping at Baywest**

Depart at 08:30 from the Boardwalk Hotel



Angelic Wings Ceramics



Baywest

Creative ceramic art class for about 2 hours at Angelic Wings Ceramics. This includes all equipment required. Companions will be taken to Baywest to do some shopping ending their excursion with a lunch at Melissa's in Baywest.

**DAY 3**  
**FRIDAY**  
 02 November 2018

**Cape Recife Lighthouse and SANCCOB Penguin Rescue Station Tour**

Depart at 08:30 from the Boardwalk Hotel



Cape Recife lighthouse



SAMREC



Companions will visit the 24 metres high Cape Recife lighthouse. It is the turning point into the bay and warns mariners of Thunderbolt Reef and other hazards which have to be given a wide berth. The tower is built on a rock foundation, known as D'Urban, and it situated on a headland in the midst of a large expanse of sandy beach.

SAMREC is Port Elizabeth's new marine bird and penguin rehabilitation and education centre. The centre's purpose isn't just to rescue and rehabilitate, but to also inform and educate the public through their different programs. Companions will tour the marine rehabilitation and education centre and experience nature through sight, sound and touch.

Breakfast will be provided.

**SPECIAL NOTES**

IMESA will purchase a 5 in 1 pass for each Companion. This cost covers entry to some of the excursions and can be used by the companions for any excursion they wish to attend outside the conference for a period of 5 days (the three days of the conference is included in the pass). A booklet detailing the discounts and free entry to various attractions in and around Port Elizabeth will be included in the Companion goody bag.